

# Revisión de Bivalvia en las costas de la Península de Baja California, México de la CMPGS.



Cáceres-Martínez Carlos, Barrios-Ruiz Daniela, Rodríguez-Trejo  
Mariana & Gurgo-Salice Piero



COLECCIÓN MALACOLÓGICA PIERO GURGO SALICE



**UABCS** UNIVERSIDAD AUTÓNOMA DE  
BAJA CALIFORNIA SUR  
*Sabiduría como Meta, Patria como Destino*



# Introducción

- Durante el periodo comprendido entre 2015 y 2018, se realizó una revisión de la Clase Bivalvia en la Colección Malacológica Piero Gurgo Salice (CMPGS), con la finalidad de certificar su identidad taxonómica, este trabajo sirvió de base para poner al día la ocurrencia de Bivalvos en las costas de Baja California Sur



# BIVALVIA

## PROTOBRANCHIA

### NUCULIDA

#### NUCULOIDEA

#### NUCULIDAE

*Ennucula colombiana* (Dall, 1908)

*Ennucula tenuis* (Montagu, 1808)

*Linucula declivis* (Hinds, 1843)

*Nucula carlottensis* Dall, 1897

*Nucula exigua* Sowerby I, 1833

### SOLEMYIDA

#### SOLEMYOIDEAE

#### SOLEMYDAE

*Solemya valvulus* P. P. Carpenter, 1864

*Solemya panamensis* Dall, 1908,

### NUCULANIDA

#### NUCULANOIDEA

#### NUCULANIDAE

*Adrana metcalfei* (Hanley, 1860)

*Nuculana costellata* (Sowerby I, 1833)

*Nuculana hamata* (Carpenter, 1864)

*Saccella acapulcensis* (Pilsbry & Lowe, 1932)

*Saccella hindsii* (Hanley, 1860)

*Saccella impar* (Pilsbry & Lowe, 1932)

*Saccella laeviradius* (Pilsbry & Lowe, 1932)

*Saccella penderi* (Dall & Bartsch, 1910)



**HETERODONTA**  
**EUHETERODONTA**  
**IMPARIDENTIA**  
**GASTROCHAENOIDEA**  
**GASTROCHAENIDAE**

*Gastrochaena ovata* Sowerby I, 1834 →  
*Lamychaena truncata* (Sowerby I, 1834)

**SOLENOIDEA**  
**PHARIDAE**

*Ensis californicus* Dall, 1899  
*Ensis nitidus* (Clessin, 1888)

**SOLENIDAE**

*Solen rosaceus* Carpenter, 1864

**Galeommatoidea**

**THYASIRIDAE**

*Channelaxinus oliveri* Valentich-Scot & Coan, 2012.

**GALEOMMATIDAE**

*Cymatioa pulchra* (Philippi, 1849)

**LASAEIDAE**

*Planktomya henseni* Simroth, 1896

*Lasaea adansoni* (Gmelin, 1791)

*Kellia suborbicularis* (Montagu, 1803)

*Diarmaidia jingchunae* Valentich-Scott, 2012

*Pythinella sublaevis* (Carpenter, 1857)

*Kelliopsis obliqua* (Harry, 1969)

*Kurtiella compressa* (Dall, 1913) →

*Kurtiella regueroae* Valentich-Scott, 2012.





# CARDIIDAE

## CARDIOIDEA

### CARDIIDAE

*Americardia biangulata* (Broderip & Sowerby I, 1829)

*Apiocardia obovalis* (Sowerby I, 1833)

*Clinocardium nuttalli* (Conrad, 1837)

*Laevicardium clarionense* (Hertlein & A.M. Strong, 1947)

*Laevicardium elatum* (Sowerby I, 1833)

*Laevicardium substriatum* (Conrad, 1837)

*Lophocardium annettae* (Dall, 1889)

*Microcardium pazianum* (Dall, 1916)

*Papyridea aspersa* (Sowerby I, 1833)

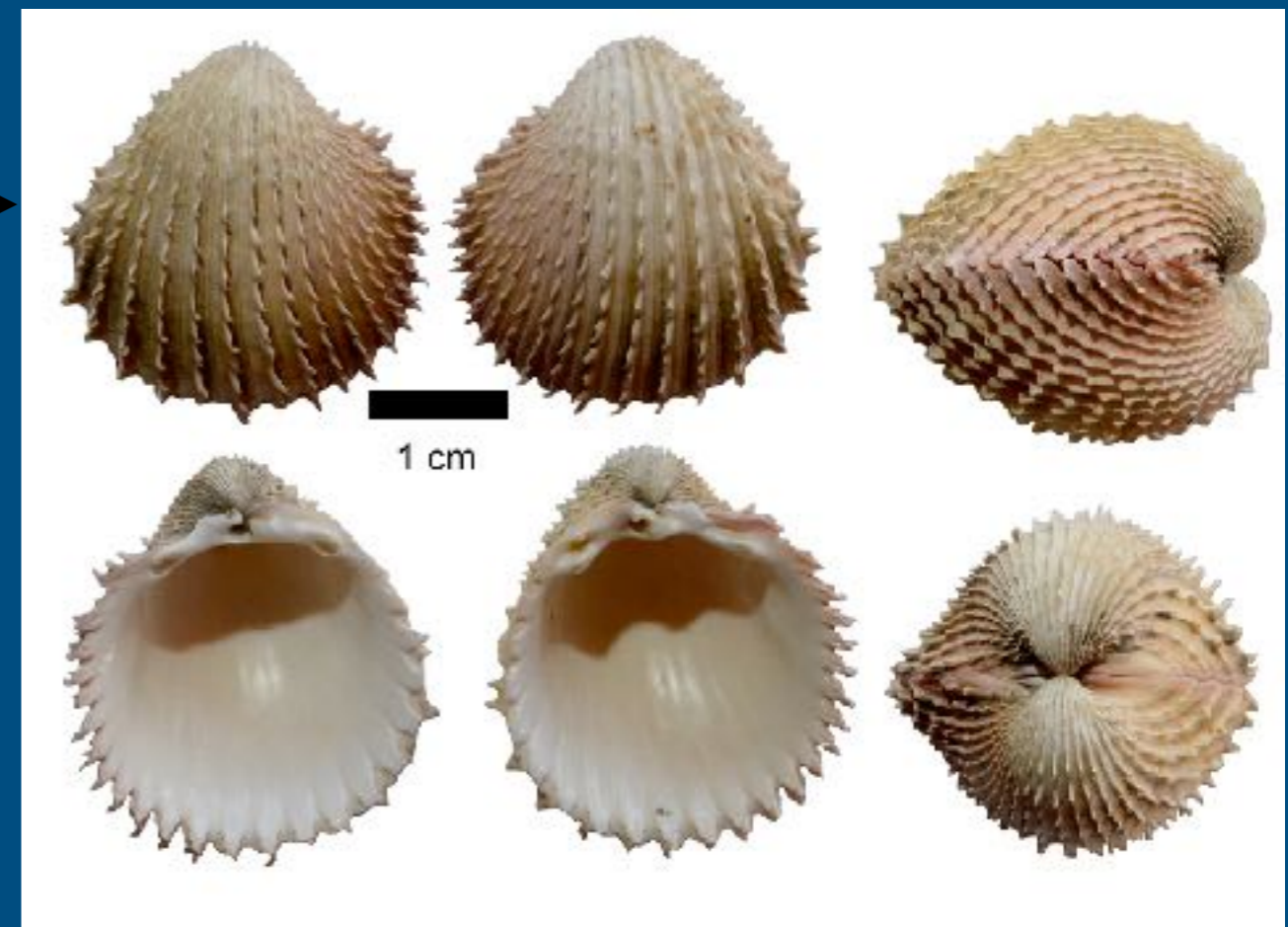
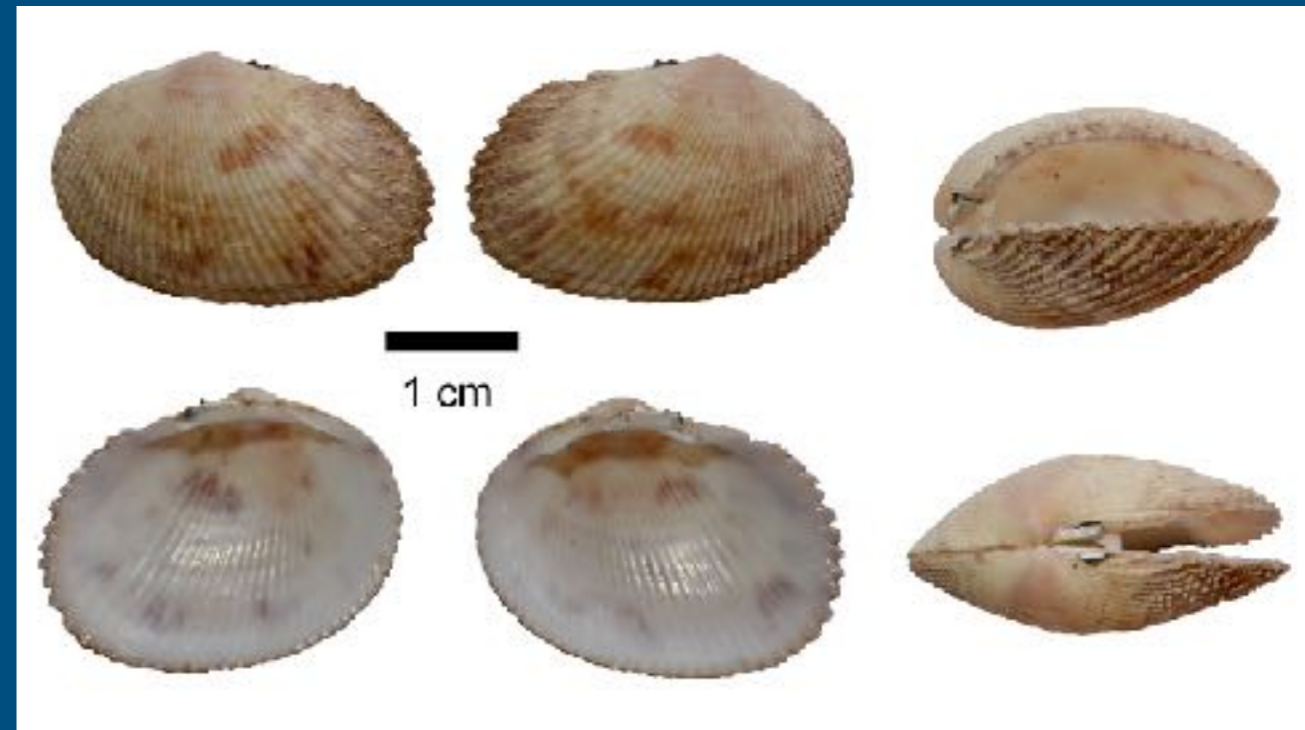
*Papyridea hiulca* (Reeve, 1845)

*Trachycardium belcheri* (Broderip & Sowerby I, 1829)

*Trachycardium consors* (Sowerby I, 1833)

*Trachycardium procerum* (Sowerby I, 1833)

*Trigoniocardia granifera* (Broderip & Sowerby I, 1829)



## TELLINOIDEA

### TELLINIDAE

- Ameritella amianta* (Dall, 1900)
- Ameritella coani* (Keen, 1971)
- Coanyax pacificus* (Dall, 1900)
- Cymatoica undulata* (Hanley, 1844)
- Eurytellina hiberna* (Hanley, 1844)
- Eurytellina regia* (Hanley, 1844)
- Laciolina ochracea* (Carpenter, 1864) →
- Lyratellina lyra* (Hanley, 1844)
- Macoma nasuta* (Conrad, 1837)
- Macoploma ecuadoriana* (Pilsbry & Olssin, 1941)
- Macoploma hesperus* (Dall, 1908)
- Macoploma lamproleuca* (Pilsbry & Lowe, 1932)
- Megangulus bodeguensis* (Hinds, 1845)
- Merisca cristallina* (Spengler, 1798)
- Phyllodina pristiphora* (Dall, 1900)
- Psammotreta psammotella* (Lamarck, 1818)
- Rexithaerus secta* (Conrad, 1837)
- Serratina martinicensis* (d'Orbigny, 1853)
- Serratina reclusa* (Dall, 1900)
- Serratina steinbecki* (Coan & Valentich-Scott, 2010)
- Strigilla chroma* A. E. Salisbury, 1934
- Tampaella meropsis* (Dall, 1900)
- Tampaella straminea* (Deshayes, 1855)
- Tellidora burnetti* (Broderip, 1829) →
- Tellina subangulata* Sowerby II, 1868
- Tellinella cumingii* Hanley, 1844
- Tellinella zaca* (Hertlein & Strong, 1949)





**PSAMMOBIIDAE**

- Gari californica* (Conrad, 1849)
- Gari lata* (Deshayes, 1855)
- Gari panamensis* Olssin, 1961
- Heterodonax pacificus* (Conrad, 1837)
- Psammotella bertini* (Pilsbry & Lowe, 1932)



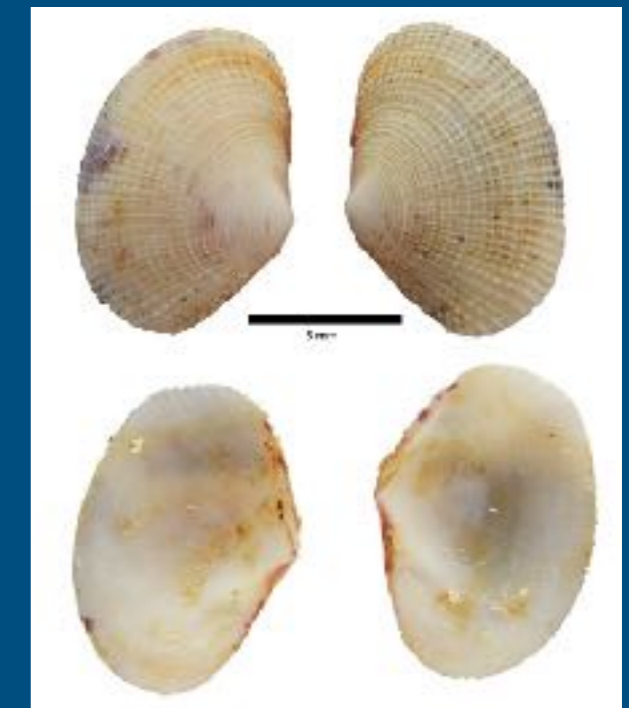
**SOLECURTIDAE**

- Tagelus affinis* (Adams, 1852)
- Tagelus californianus* (Conrad, 1837)
- Tagelus dombeii* (Lamarck, 1818)
- Tagelus longisinuatus* Pilsbry & Lowe, 1932
- Tagelus peruanus* (Dunker, 1861)
- Tagelus politus* (Carpenter, 1857)



**SEMELIDAE**

- Abra tepocana* Dall, 1915
- Semele bicolor* (C. B. Adams, 1852)
- Semele californica* (Reeve, 1853)
- Semele decisa* (Conrad, 1837)
- Semele flavescens* (Gould, 1851)
- Semele jovis* (Reeve, 1853)
- Semele lenticularis* (Sowerby I, 1833)
- Semele pacifica* Dall, 1915
- Semele pallida* (Sowerby I, 1833)
- Semelina subquadrata* (Carpenter, 1857)
- Semele pulchra* (Sowerby I, 1833)
- Semele verrucosa* Mörch, 1860



## DONACIDAE

*Donax californicus* Conrad, 1837

*Donax gracilis* Hanley, 1845

*Donax punctatostriatus* Hanley, 1843

## CHAMOIDEA

### CHAMIDAE

*Chama arcana* Bernard, 1976

*Chama buddiana* Adams, 1852

*Chama coralloides* Reeve, 1846

*Chama echinata* Broderip, 1835

*Chama frondosa* Broderip, 1835

*Chama hicksi* Valentich-Scott & Coan, 2010

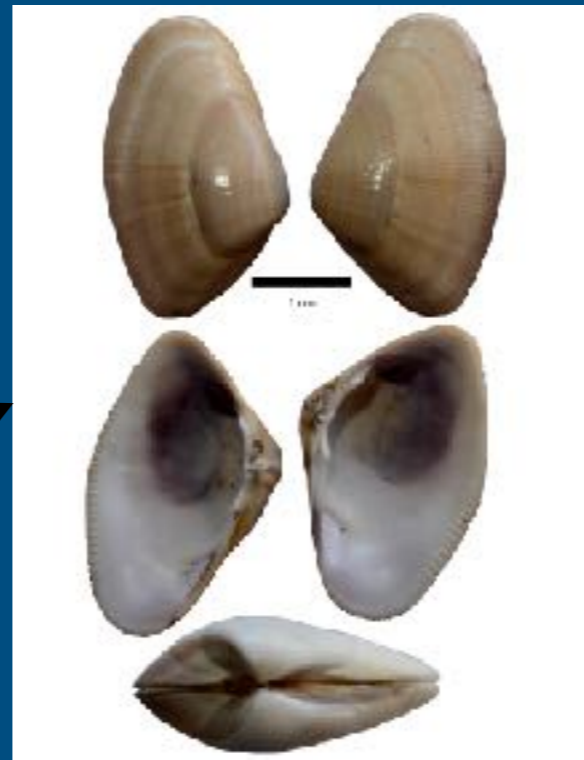
*Chama janus* Reeve, 1847

*Chama producta* Broderip, 1835

*Chama sordida* Broderip, 1835

*Chama venosa* Reeve, 1847

*Pseudochama saavedrai* (Hertlein & Strong, 1946)





**LUCINIDA**  
**LUCINOIDEA**  
**LUCINIDAE**

*Anodontia edentuloides* (Verrill, 1870) →

*Cavilinga lampra* (Dall, 1901)

*Cavilinga lingualis* (Carpenter, 1864)

*Cavilinga prolongata* (Carpenter, 1857)

*Codakia distinguenda* (Tryon, 1872)

*Ctena chiquita* (Dall, 1901)

*Ctena mexicana* (Dall, 1901) →

*Divalinga eburnea* (Reeve, 1850)

*Here excavata* (Carpenter, 1857)

*Liralucina approximata* (Dall, 1901)

*Lucinisca fenestrata* (Hinds, 1845) →

*Parvilucina mazatlanica* (Carpenter, 1857)

*Pegophysema blanquita* (Taylor & Glover, 2005)

*Pleurolucina undata* (Carpenter, 1865)

*Radiolucina cancellaris* (Philippi, 1846)

**MYIDA**

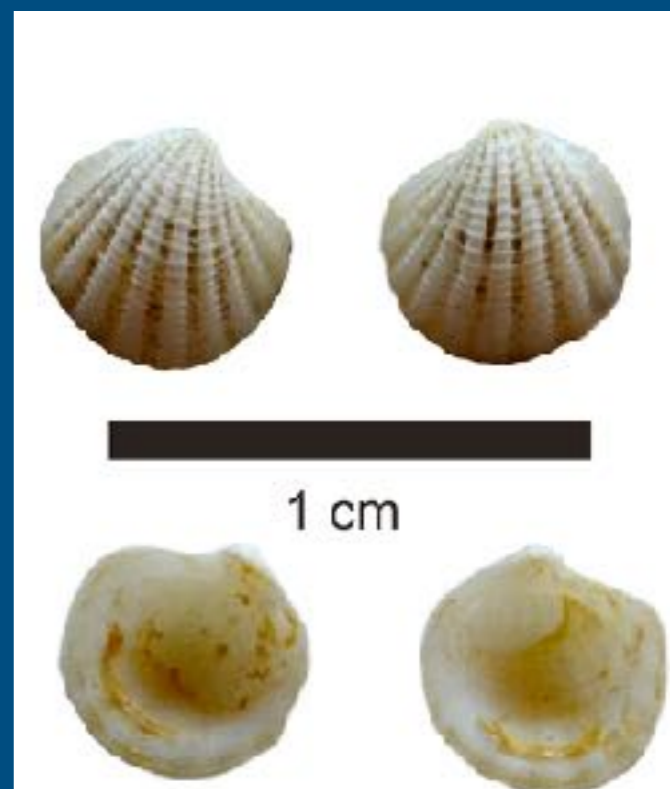
**PANDORIDAE**

*Frenamya radians* (Dall, 1915)

*Pandora sarahae* Valentich-Scott & Skoglund, 2010

*Pandora uncifera* Pilsbry & Lowe, 1932.

*Foveadens panamensis* (Dall, 1915)



**HIATELLOIDEA**

**HIATELLIDAE**

*Panopea globosa* Dall, 1898 →

*Hiatella artica* (Linnaeus, 1767)

**MYOIDEA**

**CORBULIDAE**

*Caryocorbula marmorata* (Hinds, 1843)

*Caryocorbula luteola* (Carpenter, 1864)

*Caryocorbula porcella* (Dall, 1916)

*Caryocorbula ira* (Dall, 1908)

*Varicorbula obesa* (Hinds, 1843)

*Tenuicorbula tenuis* (Sowerby I, 1833)

**MYIDAE**

*Sphenia fragilis* (H. Adams & A. Adams, 1854)

**PHOLADOIDEA**

**PHOLADIDAE**

*Barnea subtruncata* (Sowerby I, 1834)

*Pholas chiloensis* Molina, 1792 →

*Martesia striata* (Linnaeus, 1758)

*Sphenia fragilis* (H. Adams & A. Adams, 1854)

**UNGULIOIDEA**

**UNGULINIDAE**

*Zemysina orbella* (Gould, 1851) →

*Foveamysia soror* (Adams, 1852)

*Phlyctiderma caelatum* (Reeve, 1850)

*Timothyus inezensis* (Hertlein & Strong, 1947)

*Zemysina subquadrata* (Carpenter, 1856)





**ANOMALODESMATA**

**CUSPIDARIOIDEA**

**CUSPIDARIIDAE**

*Plectodon scaber* Carpenter, 1864

*Cuspidaria parapodema* F. R. Bernard, 1969

*Cardiomya costata* (Sowerby I, 1834)

*Cardiomya didyma* (Hinds, 1843)

**SPHENIOPSIDAE**

*Grippina berryana* Keen, 1971.

**BASTEROTIIDAE**

*Basterotia obliqua* Coan, 1999

**PANDOROIDEA**

**LYONSIDAE**

*Entodesma brevifrons* (Sowerby I, 1834)

*Entodesma inflatum* (Conrad, 1837)

*Lyonsia californica* Conrad, 1837

*Lyonsia nesiotis* Dall, 1915

**THACIOIDEA**

**THRACIDAE**

*Cyathodonta undulata* Conrad, 1849

*Thracia squamosa* Carpenter, 1856

*Skoglundia colpoica* (Dall, 1915)

**PERIPLOMATIDAE**

*Periploma lenticulare* Sowerby I, 1834

*Periploma lagartillum* Olssin, 1961



1 cm

**VERTICORDIOIDEA**

**VERTICORDIIDAE**

*Trigonulina novemcostata* (A. Adams & Reeve, 1850)

**CARDITIDA**

**CARDITOIDEA**

**CARDITIDAE**

*Carditamera affinis* (Sowerby I, 1833)

*Carditamera radiata* (Sowerby I, 1833)

*Cardites crassicostatus* (Sowerby I, 1825)

*Cardites laticostatus* (Sowerby I, 1833)

**CRASSATELLOIDEA**

**CRASSATELLIDAE**

*Crassinella adamsi* Olssin, 1961

*Crassinella pacifica* (Adams, 1852)

*Crassinella skoglundae* Coan, 1979

*Kalolophus antillarum* (Reeve, 1842)

**VENERIDA**

**CYAMIOIDEA**

**SPORTELLIDAE**

*Fabella stearnsii* (Dall, 1899)

**CYRENOIDEA**

**Cyrenidae (Freshwater)**

*Polymesoda inflata* (Philippi, 1851)

**MACTROIDEA**

**MACTRIDAE**

*Mactrotoma californica* (Conrad, 1837)

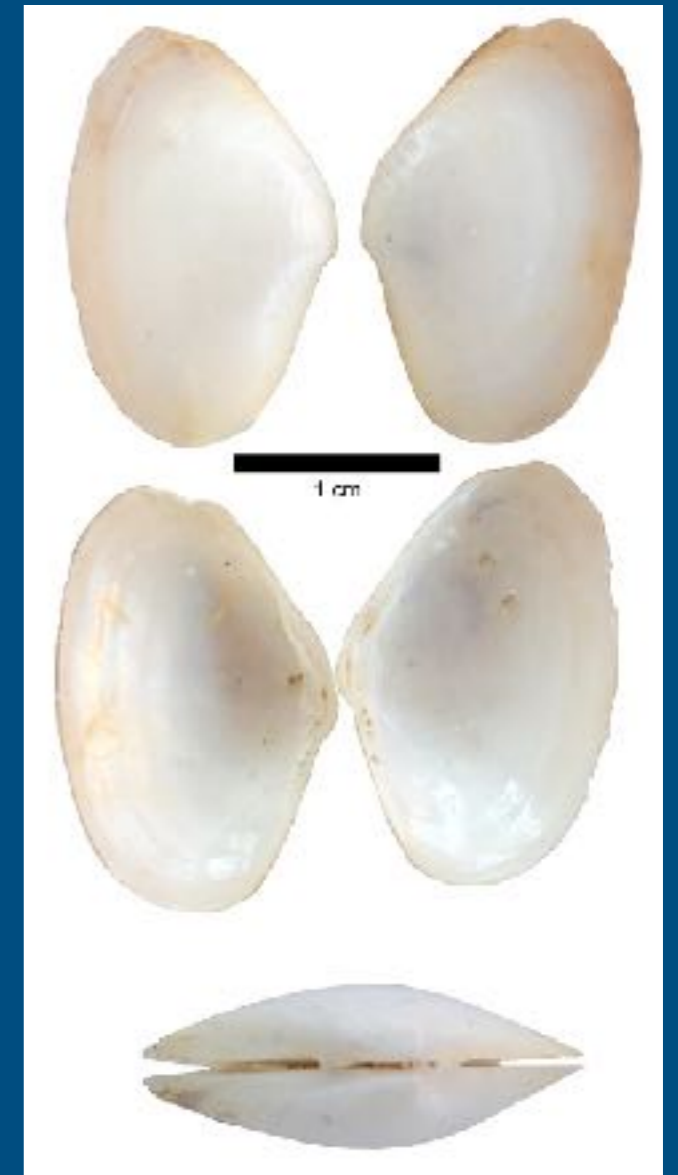
*Mactrotoma angusta* (Reeve, 1854)

*Mulinia modesta* (Carpenter, 1864)

*Mulinia pallida* (Broderip & Sowerby I, 1829)

**ANATELLIDAE**

*Raeta undulata* (Gould, 1851)





**VENEROIDEA**

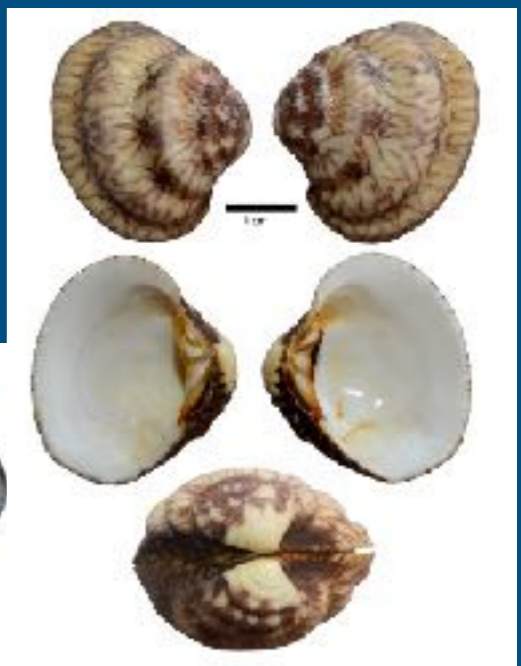
**VENERIDAE**

- Agriopoma catharium* (Dall, 1902)
- Amiantis callosa* (Conrad, 1837)
- Callpita frizzelli* (Hertlein & Strong, 1948)
- Chione californiensis* (Broderip, 1836)
- Chione compta* (Broderip, 1835)
- Chione guatulcoensis* Hertlein & Strong, 1948
- Chione tumens* Verrill, 1870
- Chione undatella* (Sowerby I, 1835)
- Chione undatella neglecta* (Sowerby I, 1835)
- Chione undatella taberi* (Parquer, 1949)
- Chionista fluctifraga* (Sowerby II, 1853)
- Chionista fluctifraga cortezi* (P. P. Carpenter, 1864)
- Chionopsis amathusia* (Philippi, 1844)
- Chionopsis gnidia* (Broderip & Sowerby I, 1829)
- Choristodon robustus* (Sowerby I, 1834)
- Cooperella subdiaphana* (Carpenter, 1864)
- Cyclinella jadisi* Olsson, 1961
- Cyclinella subquadrata* (Hanley, 1844).
- Dosinia dunkeri* (Philippi, 1844)
- Dosinia ponderosa* (Gray, 1838)
- Globivenus isocardia* (Verrill, 1870)
- Globivenus magdalenae* (Dall, 1902)
- Hyphantosoma pollicaris* (Carpenter, 1864)
- Hysteroconcha lupanaria* (Lesson, 1831)
- Hysteroconcha rosea* (Broderip & Sowerby I, 1829)
- Ilioconche subrugosa* (Wood, 1828)
- Lamelliconcha unicolor* (Sowerby I, 1835)
- Leukoma asperrima* (Sowerby I, 1835)
- Leukoma grata* (Say, 1831)
- Leukoma histrionica* (Sowerby I, 1835)
- Leukoma laciniata* (P P Carpenter, 1864)
- Leukoma sugillata* (Reeve, 1863)
- Lirophora kelletii* (Hinds, 1845)
- Lirophora mariae* (d'Orbigny, 1846)
- Megapitaria aurantiaca* (Sowerby I, 1831)
- Megapitaria squalida* (Sowerby I, 1835)
- Nutricula humilis* (Carpenter, 1857)
- Nutricula humilis* (Carpenter, 1857)
- Paphonotia elliptica* (Sowerby I, 1834)
- Peryglipia multicostata* (Sowerby I, 1835)
- Petricola californiensis* Pilsbry & Lowe, 1932
- Petricola carditoides* (Conrad, 1837)
- Petricola denticulata* Sowerby I, 1834
- Petricola exarata* (Carpenter, 1857)
- Petricola insignis* (Deshayes, 1854)
- Petricola scotti* Coan, 1997.
- Pitar pura* (Deshayes, 1853)
- Saxidomus nuttalli* Conrad, 1837



*Chionista fluctifraga*

*Chione tumens*



*Ilioconche subrugosa*



*Hysteroconcha lupanaria*



*Lirophora kelletii*

*Tivela byronensis*



- Tivela argentina* (Sowerby I, 1835)
- Tivela byronensis* (Gray, 1838)
- Tivela delesserti* (Sowerby II, 1854)
- Tivela planulata* (Broderip & Sowerby I, 1830)
- Tivela stultorum* (Mawe, 1823)



**NEOLEPTONIDAE**

*Neolepton chaneyi* Coan & Valentich-Scott, 2012

*Neolepton salmoneum* (Carpenter, 1864)

*Neolepton subtrigonum* (Carpenter, 1864)

**PTERIOMORPHA**

**LIMIDA**

**Limoidea**

**Limidae**

*Limaria pacifica* (d'Orbigny, 18456)

*Limaria hemphilli* (Hertlein & Strong, 1946)

*Acesta smithi* (Sowerby III, 1888)

**OSTREIDA**

**OSTREOIDEA**

**OSTREIDAE**

*Ostrea megodon* (Hanley, 1846)

*Ostrea tubulifera* Dall, 1914

*Magallana gigas* (Thunberg, 1793)

*Striostrea prismatica* (Gray, 1825)

*Ostrea lurida* Carpenter, 1864

*Crassostrea corteziensis* (Hertlein, 1951)

*Saccostrea palmula* (Carpenter, 1857)

*Ostrea angelica* Rochebrune, 1895

*Dendostrea folium* (Linnaeus, 1758)

*Dendostrea sandvichensis* (Sowerby, 1871)

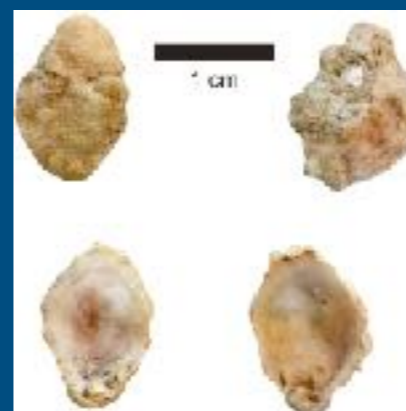
**GRYPHAEIDAE**

*Hyotissa hyotis* (Linnaeus, 1758)

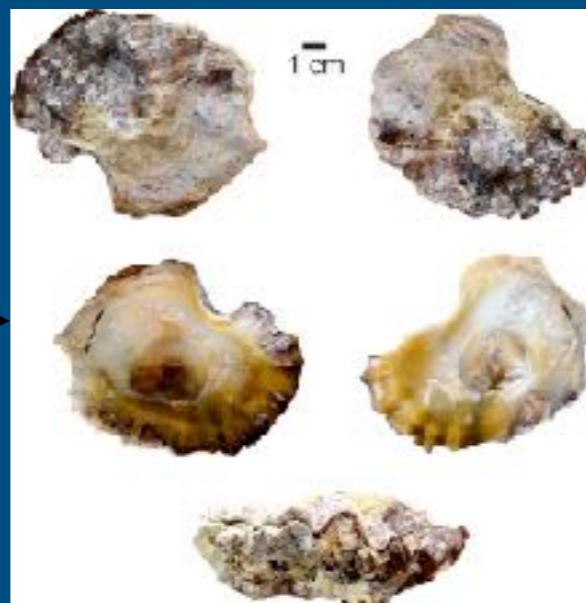
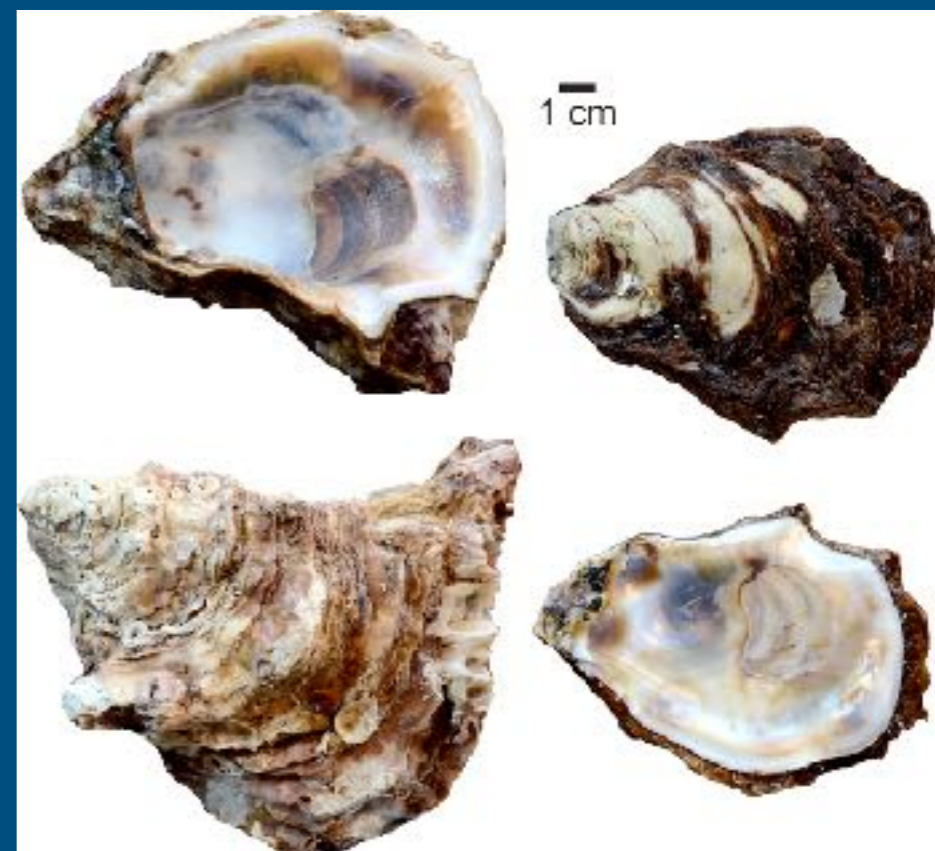
*Hyotyssa quercina* (Sowerby II, 1871)



*Ostrea tubulifera*



*Dendostrea folium*





**PINNOIDEA**

**PINNIDAE**

*Atrina oldroydii* Dall, 1901

*Atrina maura* (Sowerby I, 1835)

*Atrina tuberculosa* (Sowerby I, 1835)

*Pinna rugosa* Sowerby I, 1835

*Pinna incurva* Gmelin, 1791

**PTERIOIDEA**

**PTERIIDAE**

*Isognomon janus* Carpenter, 1857

*Isognomon recognitus* (Mabille, 1857)

*Pinctada mazatlanica* (Hanley, 1856)

*Pteria sterna* (Gould, 1851)

**PECTINIDA**

**ANOMIOOIDEA**

**ANOMIIDAE**

*Pododesmus macrochisma* (Deshayes, 1839)

*Placunanomia panamensis* Olssin, 1942

*Placunanomia cumingii* Broderip, 1832

*Anomia peruviana* d'Orbigny, 1846

**DIMYOIDEA**

**DIMYIDAE**

*Dimya californiana* S. S. Berry, 1936

**PECTINIDAE**

*Crassadoma gigantea* (J E Gray, 1825)

*Spathochlamys vestalis* (Reeve, 1853)

*Leptopecten camerella* (Berry, 1968)

*Leptopecten latiauratus* (Conrad, 1837)

*Leptopecten euterpes* (Berry, 1957)

*Delectopecten vancouverensis* (Whiteaves, 1893)

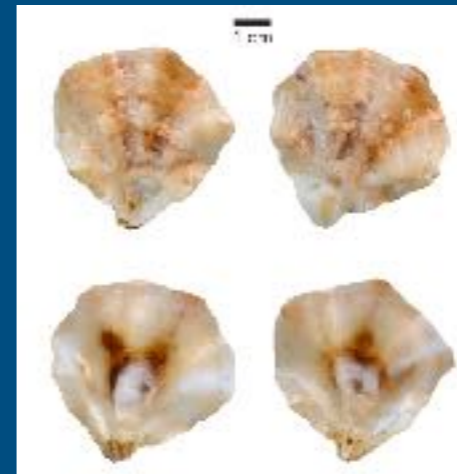
*Cyclopecten pernomus* (Hertlein, 1935)

*Argopecten ventricosus* (Sowerby II, 1842)

*Euvola vogdesi* (Arnold, 1906)

*Euvola perula* (Olssin, 1961)

*Nodipecten subnodosus* (Sowerby I, 1835)



*Atrina oldroydii*

*Nodipecten subnodosus*





**SPONDYLIDAE**

- Spondylus crassisquama* Lamarck, 1819
- Spondylus leucacanthus* Broderip, 1833
- Spondylus limbatus* Sowerby II, 1847
- Spondylus gloriosus* Sowerby II, 1847

**PILICATULOIDEA**

**PLICATULIDAE**

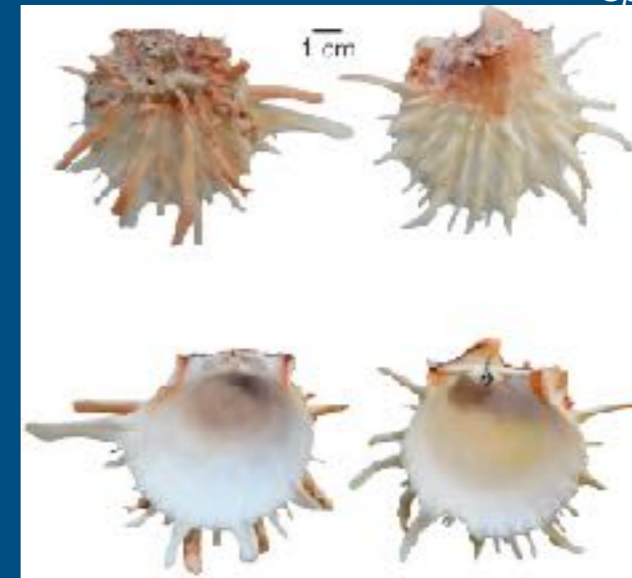
- Plicatula penicillata* Carpenter, 1857
- Plicatula spondylopsi* Rochebrune, 1895
- Plicatulostrea anomioides* (Keen, 1958)

**ARCIDA**

**ARCOIDEA**

**ARCIDAE**

- Acar bailyi* Bartsch, 1931
- Acar gradata* (Broderip & Sowerby I, 1829)
- Acar rostrae* (Berry, 1954)
- Anadara adamsi* Olssin, 1961
- Anadara biangulata* (Sowerby I, 1833)
- Anadara cepoides* Reeve, 1844)
- Anadara concinna* (Sowerby I, 1833)
- Anadara emarginata* (Sowerby I, 1833)
- Anadara esmeralda* (Pilsbry & Olssin, 1941)
- Anadara formosa* (Sowerby I, 1833)
- Anadara grandis* (Broderip & Sowerby I, 1829)
- Anadara labiosa* (Sowerby I, 1833)
- Anadara nux* (Sowerby I, 1833)
- Anadara perlabiata* (Grant & Gale, 1931)
- Anadara reinharti* (Lowe, 1935)
- Anadara similis* (Adams, 1852)
- Anadara tuberculosa* (Sowerby I, 1833)
- Arca mutabilis* (Sowerby I, 1833)
- Arca pacifica* (Sowerby I, 1833)
- Arcopsis solida* (Sowerby I, 1833)
- Barbatia lurida* (Sowerby I, 1833)
- Barbatia reeveana* (d'Orbigny, 1846)
- Calloarca alternata* (Sowerby I, 1833)
- Fugleria illota* (Sowerby I, 1833)
- Larkinia multicostata* (Sowerby I, 1833)
- Lunarca brevifrons* (Sowerby I, 1833)



*Plicatula spondylopsi*



*Anadara nux*



*Arca pacifica*



## GLYCYMERIDIDAE

*Glycymeris gigantea* (Reeve, 1843) →

*Glycymeris maculata* (Broderip, 1832)

*Tucetona multicostata* (Sowerby I, 1833)

*Tucetona strigilata* (Sowerby I, 1833)

## MYTILIDA

### MYTILOIDEA

### MYTILIDAE

*Amygdalum americanum* Soot-Ryen, 1955 →

*Amygdalum pallidulum* (Dall, 1916)

*Brachidontes adamsianus* (Dunker, 1857)

*Brachidontes puntarenensis* (Pilsbry & Lowe 1932)

*Brachidontes semilaevis* (Menke, 1848)

*Crenella decussata* (Montagu, 1808)

*Geukensia demissa* (Dilwyn, 1817)

*Gregariella coarctata* (Carpenter, 1857)

*Leiosolenus aristatus* (Dillwyn, 1817)

*Leiosolenus attenuatus* (Deshayes, 1836)

*Leiosolenus calyculatus* Carpenter, 1857.

*Leiosolenus plumula* (Hanley, 1843)

*Lioberus salvadoricus* (Hertlein & Strong, 1946)

*Modiolatus pacificus* (Ollson, 1961)

*Modiolus americanus* (Leach, 1815)

*Modiolus capax* (Conrad, 1837)

*Modiolus eiseni* Strong & Hertlein, 1937 →

*Mytella charruana* (d'Orbigny, 1842)

*Mytella guyanensis* (Lamarck, 1819)

*Mytella tumbezensis* (Pilsbry & Olssin, 1936)

*Mytilus californianus* Conrad, 1837

*Mytilus edulis* Linnaeus, 1758

*Septifer zeteki* Hertlein & Strong, 1946



*Tucetona strigilata*



*Leiosolenus plumula*



*Mytilus californianus*



- En conclusión la clase **Bivalvia** se encuentra notablemente representada en las costas de la península de Baja California Sur.
- Todos los ejemplares de identidad Taxonómica certificada se encuentra en la CMPGS para su consulta y las fotografías de la totalidad de los ejemplares revisados se puede consultar en *Baja California Seashells Field Guide Gurgo Salice P. & Cáceres C. 2019.*

Categoría	Conteo
Taxonómica	
Bivalvia	
Subclase	2
Superorden	2
Orden	14
Superfamilia	33
Familia	51
Especie	317

